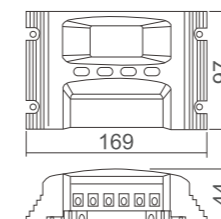
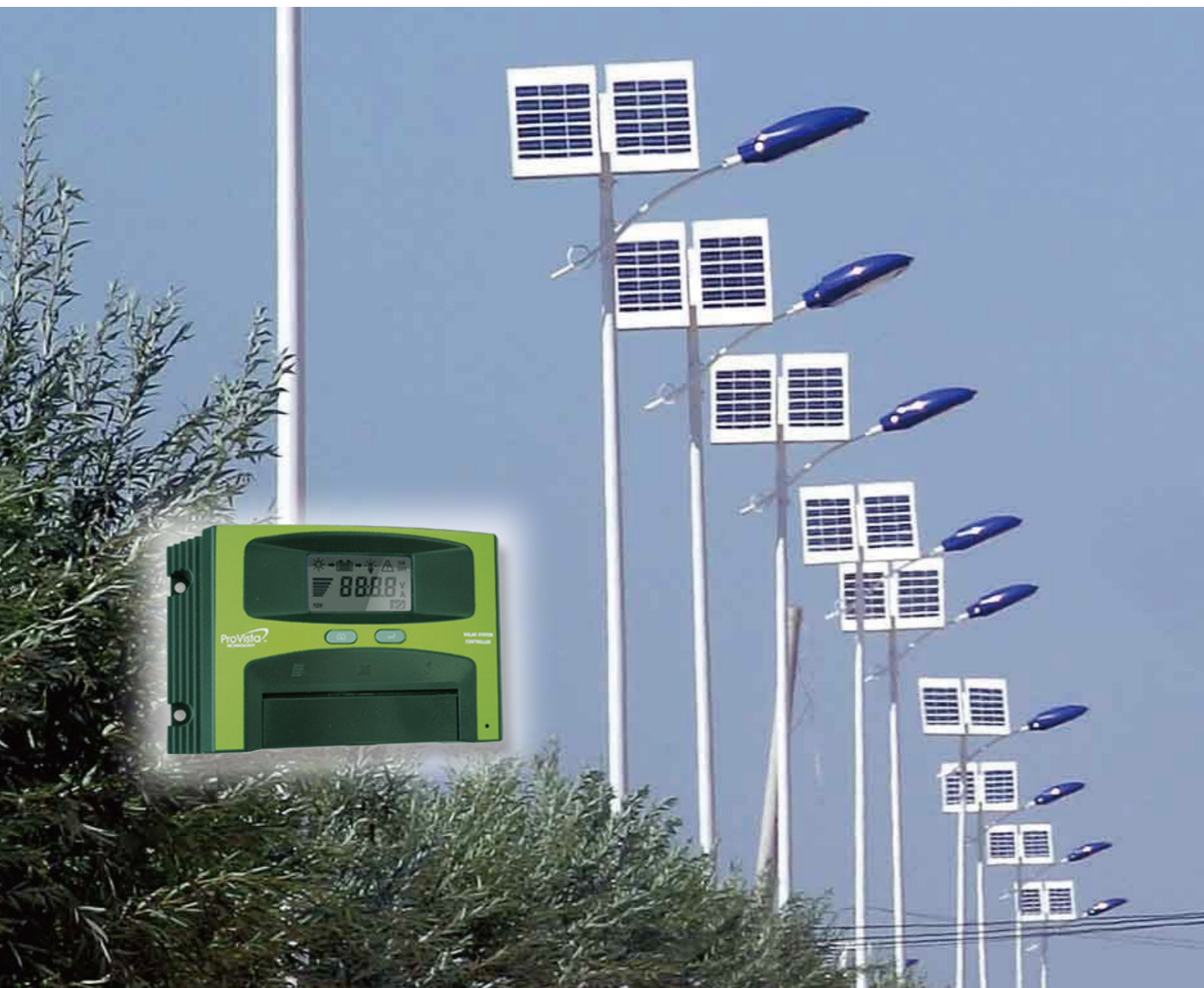


Solar Controller

Timer Street light application

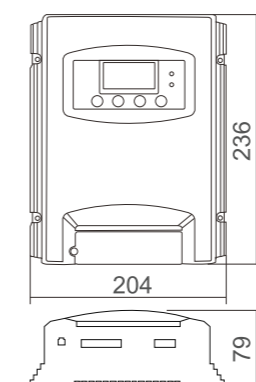


ISC 3030



Maxi ISC 30 Deluxe

- Module current : 30A
- Max. input power : 450Wp / 900Wp
- System voltage : 12V/24V auto detection
- Display : LCD display for Operation states, SOC, fault
- Extra Application: Street Light, Bus stops, advertisements at night time with special controller
- Dimension : 169 X 97 X 44 mm
- Weight : 350g



ISC 5030



Maxi ISC 50 Deluxe

- Module current : 50A
- Max. input power : 800Wp/1600Wp
- System voltage : 12V/24V auto detection
- Display : LCD display for Operation states, SOC, fault
- Extra Application : Street Light, Telecommunications, High Power Rural Electrification projects
- Dimension : 236 X 204 X 79 mm
- Weight : 1520g