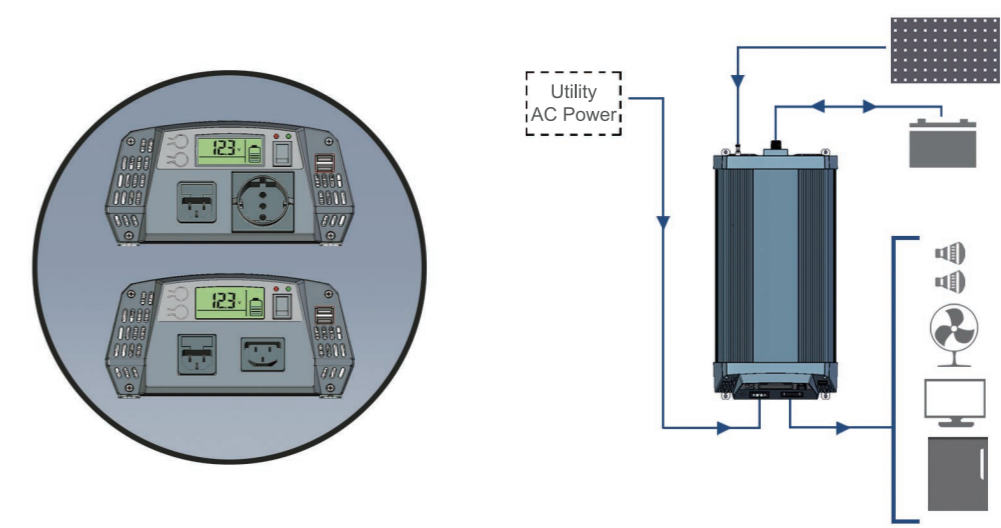


Inverter + Transfer Switch



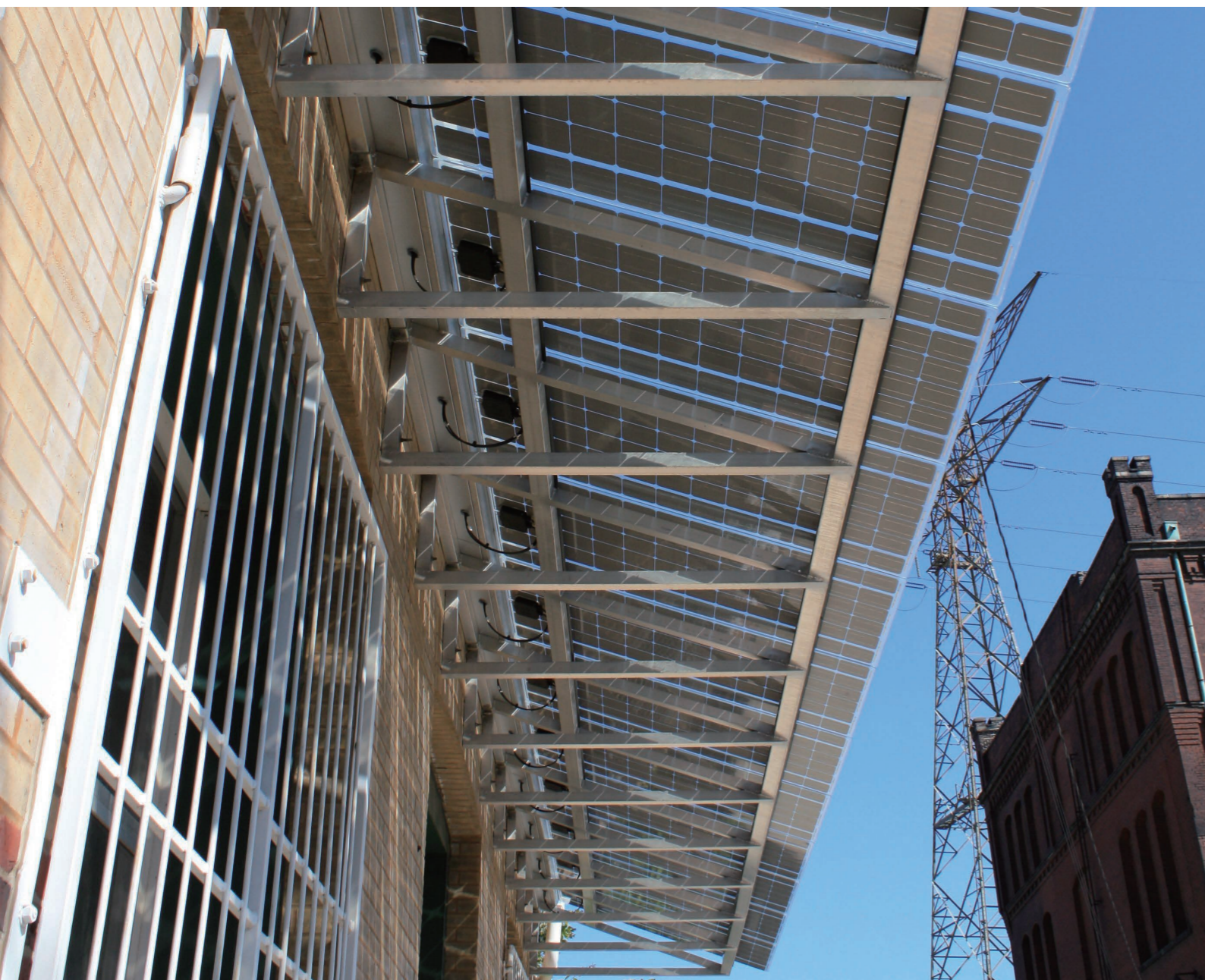
Built-in Transfer Switch, allows for Automatic Utility/Generator AC Power transfer to Inverter Power



- 20ms transfer time when going from Grid to inverter

Pure Sine Wave Inverter with built-in Transfer Switch

1000W / 1500W



Application

Built-in Transfer Switch, allows for Automatic Utility / Generator AC Power transfer to Inverter Power

Model No.	Euro Version	PIPTS1000-230	PIPTS1500-230
Dimension	(L X W X H), mm	 379x204x102	 429x204x102
Output	Output Voltage	230V/120V	
	Maximum Output Current	4.35A/8.33A	6.52A/12.5A
	Output Frequency	50/60Hz	
	Type of Output Waveform	Pure Sine wave	
	Total Harmonic Distortion of output Waveform	≤3%	
	Continuous Output Power (At Power Factor = 1)	1000W	1500W
	Surge Output Power (At Power Factor = 1; <0.5s)	2000W	3000W
	Peak Efficiency	89%/88%	
	USB Output	5V/1A/2A	
	AC Output Connections	VDE,BS,SAA/Dual GFCI	
Input	Nominal DC Input Voltage	12V	
	DC Input Voltage Range	10.5V-15.3V	
	Maximum Input Current	100A	150A
	DC Input Current At No Load	≤1A	≤1A
	DC Input Connections	Knob Terminals	
	AC Input	230V	
	Transfer Time	<20ms	
Display	LCD 	Power,Battery Level,Voltage,Current	
Protections	Low DC Input Voltage Alarm	10.5V	
	Low DC Input Voltage Shutdown	10.5V	
	High DC Input Voltage Shutdown	15.3V	
	Short Circuit Shutdown	YES	
	Overload Shutdown	1100W	1650W
	Over Temperature Shutdown	YES	
	Reverse Polarity On DC Input Side	By Fuse	
Solar Charger	Charging Current	30A PWM	30A PWM
	System Voltage	16-45V	
	Max. Input Ocv	45V	
	Max. Input Current	30A	30A
Remote	Wired Remote Control (Optional) 	YES	
Cooling	Forced Air Cooling	Temperature & Load Controlled Fan	
Compliance	Safety	CE-LVD(EN60950),AS/NZS4763:2011	
	EMI/EMC	CE-EMC,C-Tick	
Environment	Operating Temperature Range	-20 C~40 C	
Weights	Kg	3.8	4.7
	Lbs	8.512	10.528
Others	Warranty	1	
	Applications	RV,Yacht,Caravan,Truck,Portable Electrical Appliances...etc	